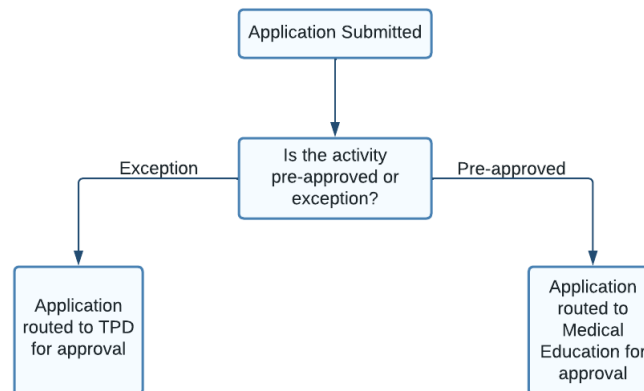


ALM Approval Chains

Current Routing

Pre-approved* courses, including Regional Teaching, are routed to Medical Education for approval. All exception applications are routed to the TPD for approval.



* **Pre-approved course lists** are provided by the school. Courses can be pre-approved depending on the applicant's curriculum specialty or grade, or both.

Revised Routing including Threshold Approver

