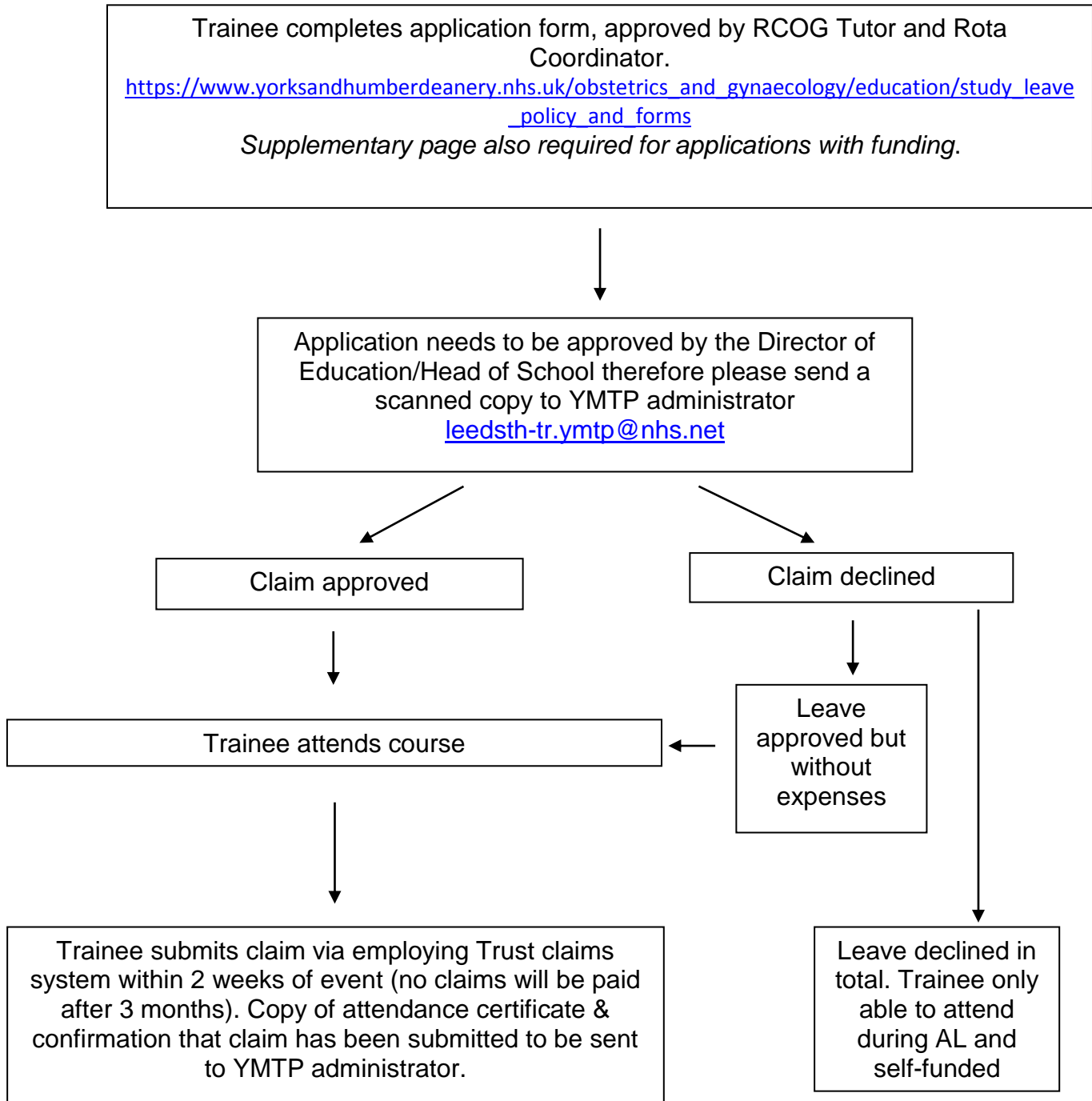




**Flowchart for Funded Study Leave for ST6-7 in School of O&G.**



**Please note:** This flowchart applies to ST 6-7 **ONLY**

In the rare instance that a St1-5 trainee should require funding for non YMTP courses, they must also follow this process; but please check the policy for allowances prior to applying. For YMTP courses there is a separate form to claim expenses only.