

Internal Medicine

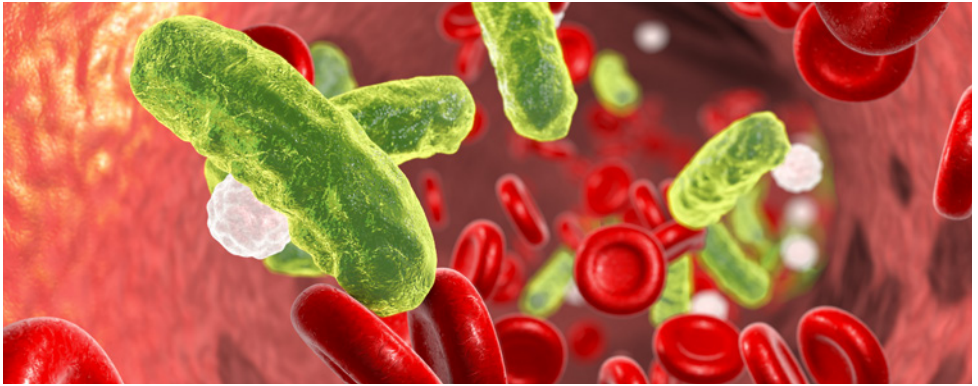
MSc, PGDip, PGCert

Clinical and professional development for a successful career



Run in partnership with educators, commissioners and practitioners from throughout the region, the course has support from Health Education Kent, Surrey, and Sussex (HEKSS). It provides a rounded education in internal medicine, including current advances in medical sciences and their application in the clinical arena. Students will gain a detailed understanding of core research methodologies, critical evaluation, evidence-based approaches and the pathophysiology of conditions of clinical interest.





MSc students are required to undertake six of the clinical and professional modules listed below (the Research Methods and Critical Appraisal module is mandatory).

Students will work with a supervisor to produce a 12,000 word dissertation on their choice of a topic related to one of the modules.

Clinical modules:

- Auto-Immunity
- Infectious Diseases and HIV Medicine
- Intensive Medicine
- Frailty and Elderly Medicine

Professional modules:

- Research Methods and Critical Appraisal
- Leadership and Change Management in Clinical Services
- Communication, Learning and Teaching in Health and Social Care

Research:

- Dissertation

Who is it for?

The course is designed for medical trainees interested in professional and academic development in the field of internal medicine.

What are the benefits?

The course provides increased scientific awareness of pathophysiological processes and will prepare medical trainees for advanced practice and senior clinical posts. It will train students to be high-achieving consultants and clinical leaders by combining clinical knowledge with professional development learning in the three key domains of leadership; communication, learning and teaching; and research and publishing skills. It will also prepare students who wish to engage in substantive research projects leading to MD or PhD.

“We are delighted to provide this unique opportunity for advanced education in internal medicine. Our Masters course promotes in-depth understanding of disease processes across a broad range of medical specialties, including their pathophysiology and latest research data. It develops high-level diagnostic skills and an expert management technique for forward looking consultant physicians of the future.”

Dr Ursula Davies • Course Leader



Entry requirements

This course will be open to medical trainees who have completed Part I MRCP – or equivalent. Other applicants may be considered if they have an equivalent level of experience and qualification. For international students a minimum IELTS score of 7.0 is required.

Fees for 2018/19

UK, EU: £8,855 • **International:** £14,580

HEKSS bursaries are available for HEKSS trainees. Please check the course web page for more details.

Further information

enquiries@brighton.ac.uk • bsms.ac.uk/internal-medicine • +44 (0) 1273 641782